

APS-100 Series Labelers

Automatic Pressure Sensitive Labeling Systems

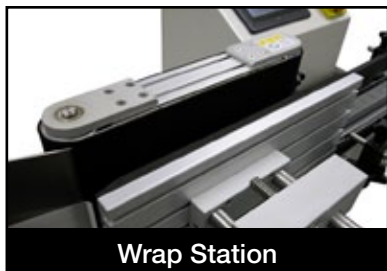


Key Features:

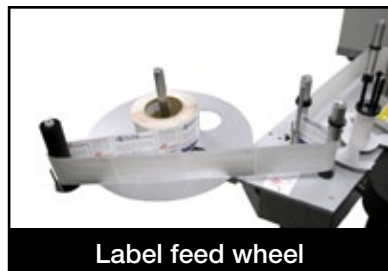
- Auto Label Learn™ (Automatic label setup)
- Label head dispenses up to 8" (20.3 cm) tall labels
- Touch screen control system with job memory
- Heavy duty construction for 3 shift operations
- Sanitary stainless steel frame
- Easy adjusting hand wheels for quick setup
- Fully synchronized conveyor / label head, with 8 different speed selections
- Height adjustable conveyor

Options:

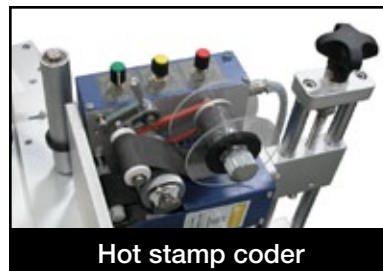
- Hot stamp date/lot Coder
- Alpha numeric starter kit
- Conical label head for conical bottles
- Pneumatic separator
- Clear label sensor
- Wheel separator
- Casters



Wrap Station



Label feed wheel



Hot stamp coder

1399 Specialty Dr., Vista CA 92081 • 760.734.4177 • Fax 760.734.4188
Email: Sales@AccutekPackaging.com • AccutekPackaging.com

ACCUTEK
Packaging Equipment Companies, Inc.

APS-100 Series Labelers

Automatic Pressure Sensitive Labeling Systems

APS-100 Series Labelers are automatic labelers ideal for applying a single pressure sensitive label to a container. Depending on the model, labelers can place 5.75" (14.5 cm) or 7.75" (19.5 cm) tall single face or single wrap around pressure sensitive labels. Each automatic labeling system is self contained and easy to operate complete with a variety of standard features. Features such as, a high torque digital drive for ensuring precise label application with low maintenance operation. Variable speed conveyor for speeds up to 175¹ CPM. A full wrap or tamp station to eliminate label wrinkling or creasing. And a non contact Photo Eye detection system for accurate timing and label placement.

One of the best features of the Labelette APS-100 Series labelers is the included Auto Label Learn software. This easy to use program allows operators to make on the fly bottle and label adjustments using the touch screen controls. This feature will make your changes overs easier and quicker helping to eliminate production down time.

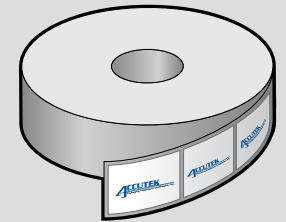
With the ability to label plastic, metal, fiber, or glass containers the APS-100 Series Labelers are a great addition to any packaging line.



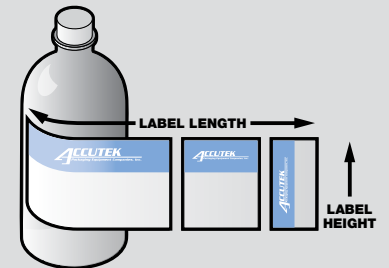
¹ Labeling speed is dependant on on operator, container dimentionts, and label size.



Examples of products labeled with pressure sensitive labels.



Label Direction
Left Side OFF - Outside Peel



Label Dimentionts

Labelette
Labelers®

ACCUTEK
Packaging Equipment Companies, Inc.

APS-106

Automatic Labeling System with 6" Single Label Head



Unit Specifications

Dimensions:	72" x 53" x 45" (183 cm x 135 cm x 114.5 cm)
Weight:	~527 lbs. (280 kg)
Electrical Requirements:	110 VAC, 10AMPS (220 VAC Optional)
Air Requirements:	None

Output

Labeling Speed:	Up to 175 CPM ¹
------------------------	----------------------------

Label Size

Label Length:	0.5" - 17" (1.25 cm - 43 cm) ²
Label Height:	0.75" - 5.75" (2 cm - 14.5 cm)
Labeling Direction:	Left side off - Outside peel

¹ Labeling speed is dependant on on operator, container dimentions, and label size.
² May required additional options for longer label lengths.

APS-108

Automatic Labeling System with 8" Single Label Head



Unit Specifications

Dimensions:	72" x 53" x 45" (183 cm x 135 cm x 114.5 cm)
Weight:	~527 lbs. (280 kg)
Electrical Requirements:	110 VAC, 10AMPS (220 VAC Optional)
Air Requirements:	None

Output

Labeling Speed:	Up to 175 CPM ¹
------------------------	----------------------------

Label Size

Label Length:	0.5" - 22" (1.25 cm - 55 cm) ²
Label Height:	0.75" - 7.75" (2 cm - 19.5 cm)
Labeling Direction:	Left side off - Outside peel

¹ Labeling speed is dependant on on operator, container dimentions, and label size.
² May required additional options for longer label lengths.