

APS-236 Labeler

Automatic Top and Bottom Labeler

Key Features:

- Auto Label Learn™
- Dual Label Heads for Top and Bottom Labeling
- Label Head Can Dispense 6" (15 cm) Tall Labels
- In Line Automatic Applications or Semi Automatic Use
- Touch Screen Control System with Job Memory
- Heavy Duty Construction for 3 Shift Operations
- Sanitary Stainless Steel Frame
- Easy Adjusting Hand Wheels for Quick Setup
- Fully Synchronized Conveyor / Label Head, with 8 Different Speed Selections

Options:

- Hot Stamp Date/Lot Coder
- Alpha Numeric Starter Kit
- Pneumatic Separator
- Clear Label Sensor
- Star Wheel Separator
- Conical Label Heads for Curved Packages
- Casters

Labelette
Labelers®



1399 Specialty Dr., Vista CA 92081 • 760.734.4177 • Fax 760.734.4188
Email: Sales@AccutekPackaging.com • AccutekPackaging.com

ACCUTEK
Packaging Equipment Companies, Inc.

APS-236 Labeler

Automatic Top and Bottom Labeler

The **APS-236** is a specialized dual head labeler designed specifically for top and bottom label applications. Ideal for all plastic, metal, fiber, and glass containers, trays, and tubs its dual label heads can simultaneously dispense different size labels up to 6" (15.24cm) tall and 11" (28cm) long. The **APS-236** easily adjustable, electronically controlled placement sensor insures accurate and symmetric placement.

APS-236 labelers also include a stepper motor drive with synchronized auto speed adjust for continuous label placement while changing speeds. Power assisted web take up to manage label roll waste. A full tamp station to insure wrinkle free application. Like Labelette Automatic Labelers the **APS-236** also include label learn and job save to make setup and changeovers a snap.

Feature Comparison Chart	Labelette	Competitors
• All motors are automatically synchronized for consistent efficient labeling	YES	NO
• No repositioning of label sensor is required for various label lengths	YES	NO
• Label Learn™ measures the label and adjusts the sensor accordingly	YES	NO
• One touch HMI Touch screen adjustment to change labeling speed	YES	NO
• Up to 30 job memories	YES	NO
• Touch screen with help menu's and trouble shooting guide	YES	NO
• LabelLearn™ ensures labels won't run out with a programmable label counter (for precise run of a set number of labels) to auto-stop	YES	NO
• Total bottles labeled counter	YES	NO
• LabelLearn™ can automatically stop labeling when a label is missing from the label roll	YES	NO
• Manufactured with major worldwide components including Panasonic, AllenBradly and Parker Hannifin. Unlike the proprietary over priced Components of our competition	YES	NO
• Accutek stocks over 27,000 different parts in over 40,000 sq ft of automated warehouse dedicated to ensuring next day in stock part delivery for over 20,000 customer machines currently in use	YES	NO
• Accutek machinery is designed in the USA and over 80% of Accutek's Product are manufactured in the USA by an American Company	YES	NO

Dimensions:

Height: 60" (152.4 cm)
 Length: 68" (172.7 cm)
 Depth: 40" (101.6 cm)

Weight:

Approx. ~425 lbs. (193 kg)

Labeling Speed:

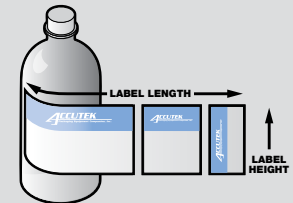
Up to 150 CPM*

Electrical:

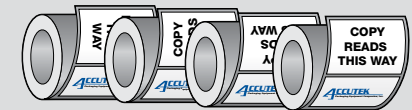
110 VAC, 60 Hz, Single Phase
 (220VAC Optional)

Label Size:

Length: 0.5"-11" (1.25-28 cm)
 Height: 0.5" - 6" (1.9-15.25 cm)



Label Dimensions



Label Direction is Job Specific

(Always Outside Peel)

Labelette
 Labelers®

ACCUTEK
 Packaging Equipment Companies, Inc.