

SPS-104 Labeler

Automatic Pressure Sensitive Table Top Labeler

Labelette
Labelers®

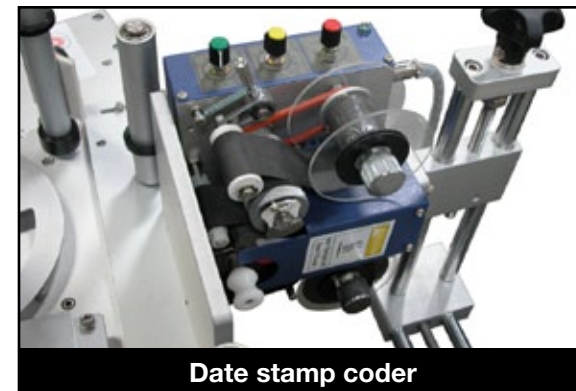


Key Features:

- One touch label set and potitioning
- One touch label set and potitioning
- Job memory for five individual projects
- Stepper motors for fast and accurate labeling
- Modular design for fast and simple maintenance
- Quick and easy changeover
- Label Count Down feature
- Container / Production Run Counter
- Heavy food grade construction

Options:

- Hot stamp date/lot coder
- Alpha numeric starter kit
- Small container adapter
- Stainless steel mobile cart



Date stamp coder

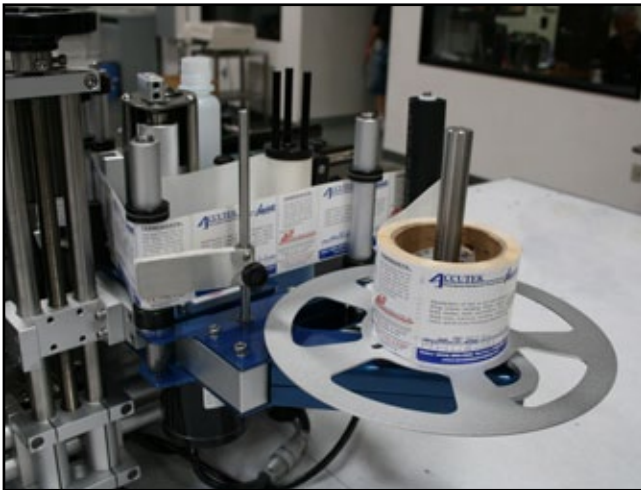
1399 Specialty Dr., Vista CA 92081 • 760.734.4177 • Fax 760.734.4188
Email: Sales@AccutekPackaging.com • AccutekPackaging.com

ACCUTEK
Packaging Equipment Companies, Inc.

SPS-104 Labeler

Automatic Pressure Sensitive Table Top Labeler

Labelette's (Automatic Pressure Sensitive) SPS-104 Table Top Labeler is an economical and efficient counter top labeling machine for round containers. This labeler is manufactured from stainless steel and anodized aluminum creating a durable but portable machine. The SPS-104 utilizes a Micro-Processor control package that is easy to set up, easy to change over, and features a production speed up to 45 containers per minute. The SPS-104 is the smart choice for the small production runs, R & D Projects, new product roll out or when efficiency vs equipment cost are major considerations.



Accutek also offers a wide selection of full size automatic Labelette labeling systems. Contact a representative or visit the website for more details.



Dimensions:

Height: 20.25" (51.4 cm)
Length: 45" (114.3 cm)
Depth: 34.25" (87 cm)

Weight:

Approx: 132 lbs. (60 kg)

Labeling Speed:

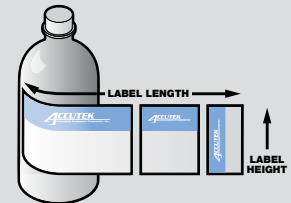
Up to 45 CPM*

Electrical:

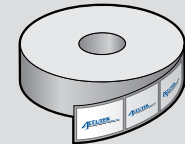
110/220 VAC 50/60 HZ 1 Phase
(220VAC Optional)

Label Size:

Length: 0.5"-11.75" (1.25-29.75 cm)
Height: 0.5" - 4.75" (1.9-12 cm)



Label Dimensions



Label Direction (Left Side Off - Outside Peel)

